

MAIN PARTICULARS

Class Notation	: BV, HULL, MACH, Dual fuel, Tug, AUT-UMS, Coastal Area, or equivalent
Length Overall	: 32.00 m
Length waterline	: 28.20 m
Breadth Moulded	: 11.30 m
Depth Moulded	: 5.33 m
Design Summer Draft	: 4.20 m
Gross Tonnage	: < 500
Max Speed	: 12.00 knots
Bollard Pull	: 50 MT @ 100% MCR
Endurance	: 8 days @ 80% MCR 24 hours per day
Complement	: 10 P

DECK EQUIPMENT

<u>Deck Crane</u>	
Foldable Boom Crane	: SWL 530Kg @ 9.4 m radius
<u>Towing Equipment</u>	
Forward Winch/Windlass	: 1 x Single drum electro-hydraulic with 2 x Warping heads, 2 x Cable lifters
Drum Capacity	: 200m @ 96dia. Rope
Forward Towing Post	: 1 x H-shaped Towing Post
Aft Towing Post	: 1 x H-shaped Towing Post
Aft Towing Winch	: 1 x Single drum electro-hydraulic with 1 x Warping head
Drum Capacity	: 500m @ 46dia. Rope
Aft Towing Hook	: 1 x 55 T SWL disc type towing hook

CAPACITY

Fuel Oil Tank	: 100 m ³
Fresh Water Tank	: 25 m ³
LNG Fuel Tank	: 30 m ³ IMO type C (vacuum insulated)
Lube Oil Tank	: 2 m ³

NAVIGATION EQUIPMENT

Navigation	1 x 36NM x-band daylight type radar
	1 x GPS compass (or satellite compass)
	1 x reflector type magnetic compass
	1 x Automatic Identification System (AIS)
	1 x echo sounder
	1 x speed log
	1 x Differential Global Positioning System (DGPS)
	1 x Bridge Navigational Watch Alarm System (BNWAS)
	1 x navigation lights & shapes
	2 x 1000W search lights

DISCHARGE RATES

Fire/GS Pump	: 1 x 30 m ³ /hr@40 m head
Bilge/Ballast Pump	: 1 x 30 m ³ /hr@40 m head
Fuel Transfer Pump	: 1 x 5 m ³ /hr@18 m head

MACHINERY

Main Engine	: 2 x 2000PS Dual Fuel Engine
Propeller	: 2 x CPP Azimuth Thruster with 19A Nozzles
Main Generator Sets	: 2 x 127 kW each
LNG Fuel Gas System	: 1 x LNG Storage Tank & Tank connection space 1 x LNG Bunkering Station 1 x Heating System 1 x Control, Monitoring & Safety System

COMMUNICATION EQUIPMENT

Navigation	GMDSS Sea Area A1
	1 x Mini-C with LRIT and SSAS
	2 x VHF Radio Equipment / DSC Watch Receiver
	1 x Satellite EPIRB
	1 x Radar Transponder (SART)
	1 x NAVTEX Receiver
	2 x Two-Way VHF Radio hand held

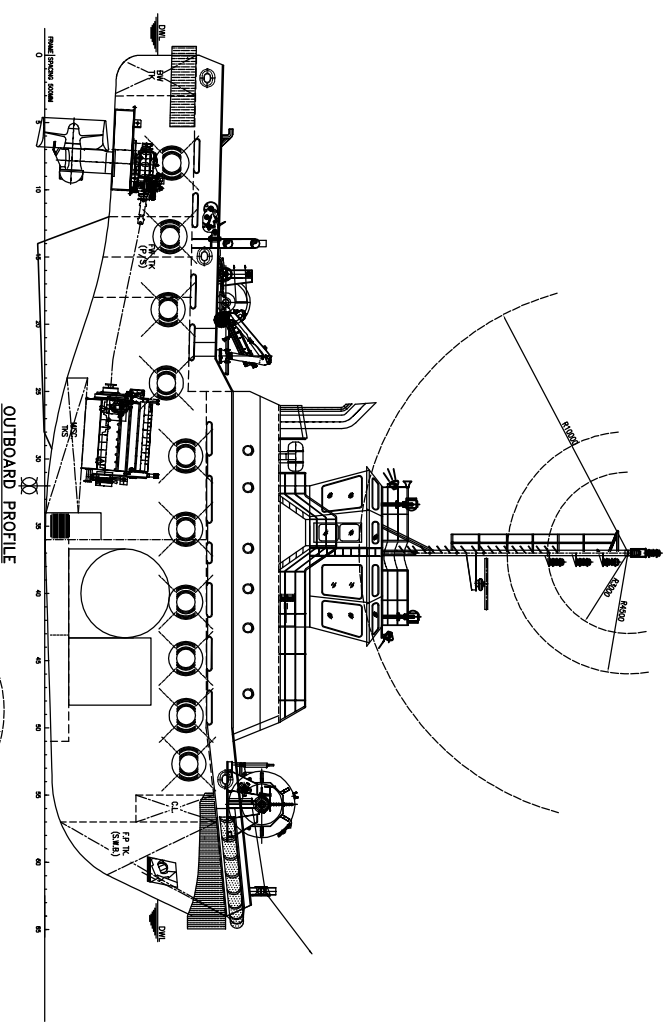
GENERAL ARRANGEMENT

PaxOcean Engineering Pte Ltd

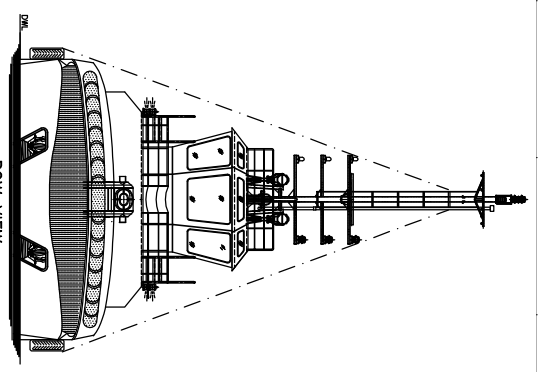
1 Kim Seng Promenade, #06-02 Great World City, Singapore 237994

Tel: +65 6733 3500 ♣ Fax: +65 6836 1642 ♣ marketing@paxocean.com ♣ www.paxocean.com

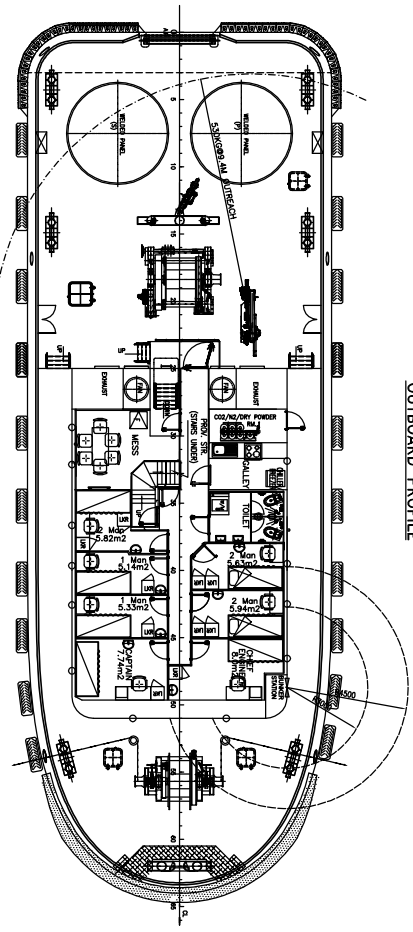
Note: The information and sketches in this document are given in good faith without express, implied or statutory warranty or condition.



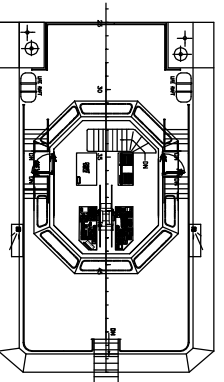
OUTBOARD PROFILE



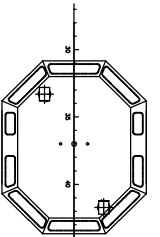
BOW VIEW



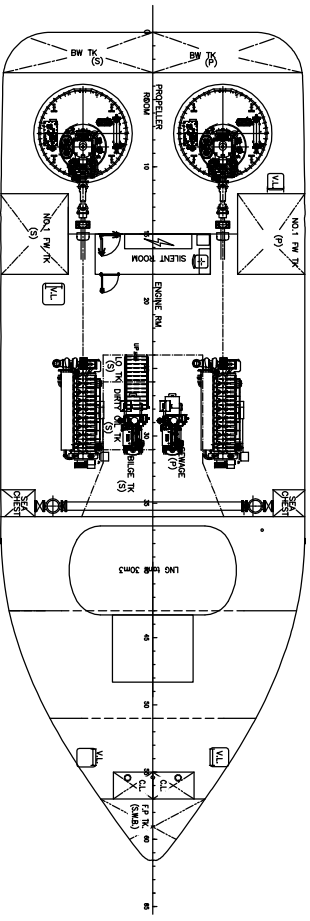
MAIN DECK



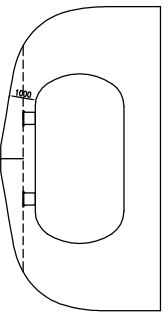
WHEELHOUSE DECK



WHEELHOUSE TOP



TANK TOP PLAN



TANK HOLD FR 40

PRINCIPAL PARTICULARS

LENGTH O.A.	32.00m
LENGTH W.L.	31.37m
BEAM M.L.D.	11.30m
DEPTH M.L.D.	5.35m
DESIGN DRAFT	4.20m
COMPLEMENT	10 men

PRELIMINARY ONLY
(UPDATED 30-SEP-2016)

REV	DATE	BY	CHKD
A	30/9/2015		LWJ
B	30/7/2016		
UPDATE AS PER DESIGN PROGRESS			
ALTERATION			
Work No. Bureau Veritas / Title: PACO Society / No. 34 / Date: 30/09/15			
Paxocean			
PROJECT: 4200PS ASD LNG TUG			
PROJECT NO. E21607A		PROJECT: BLOC	
PROJECT: 4200PS ASD LNG TUG		PROJECT: BLOC	
PROJECT: 4200PS ASD LNG TUG		PROJECT: BLOC	
PROJECT: 4200PS ASD LNG TUG		PROJECT: BLOC	
PROJECT: 4200PS ASD LNG TUG		PROJECT: BLOC	
PROJECT: 4200PS ASD LNG TUG		PROJECT: BLOC	

Copyright © 2016 Paxocean Ltd. All rights reserved. No part of this document may be reproduced, stored in a retrieval system, or transmitted in any form or by any means, electronic, mechanical, photocopying, recording, or by any information storage and retrieval system, without the prior written permission of Paxocean Ltd. Paxocean Ltd. is a company registered in the United Kingdom. Company No. 09520330. Registered office: 15, The Square, London E1 1AF, UK. Tel: +44 (0)20 7501 5100. Fax: +44 (0)20 7501 5102.