

MAIN PARTICULARS

Class Notation	: BV I * HULL * MACH, LNG bunkering ship, dual fuel, Unrestricted navigation, AUT-UMS, INWATERSURVEY, BWT, GREEN PASSPORT, CLEANSHIP, MON-SHAFT
Length Overall	: 108.00 m
Length Between Perpendiculars	: 102.00 m
Breadth Moulded	: 19.20 m
Depth Moulded	: 10.50 m
Design Summer Draft	: 6.00 m
Deadweight	: 5,850 tonnes
Gross Tonnage	: 6,560
Service Speed	: 14 knots @ 6.0m draft with 90% MCR
Endurance	: 30 days
Complement	: 18 P

CARGO HANDLING SYSTEM

Cargo Pump	: 4 x 250 m ³ /hr deepwell pump, 2 in each cargo tank
LNG Fuel/Spray Pump	: 2 x 3m ³ /hr, submerged pump, 1 in each cargo tank
Cargo Compressor	: 2 sets, electric driven
Cargo Vaporizer	: 1 set
Cargo Gas Heater	: 1 set
N ₂ /Dry Air Generator	: 1 x 200 Nm ³ /h at 8 bar, with 2 m ³ buffer tank
Cargo Hose Crane	: 1 x 3 tonnes @ 15 m, electro-hydraulic
Cargo Manifolds	: 2 x liquid lines, DN 200 1 x vapour line, DN 150 1 x nitrogen line, DN 25
Vent Mast	: 1 set
Cooling System	: Cooling water/glycol system
Optional	: 1 x 10 m ³ 10 bar LNG day tank 1 x 5 m ³ 10 bar NG buffer tank 1 x GCU for handling excess BOG

MACHINERY

Main Engine

Main Engine	: 1 x of Medium Speed type of 3,000 kW Dual Fuel Engine
Propeller	: 1 x of 4-bladed CPP Propeller
Bow Thruster	: 1 x of 250kW Tunnel FPP Thruster

Generator Sets

Shaft Alternator	: 1 x PTO/PTI @ 700 kW / 400 kW
Main Generator	: 2 x 380 ekW, MDO fueled, 450V/3/60Hz

Emergency Generator

Capacity	: 1 x 99 ekW, MDO fueled, 450V/3/60Hz
----------	---------------------------------------

CAPACITY

LNG Cargo Tanks	: ≈ 7,500 m ³ (2 x IMO Type C cylindrical tank, design temp. -163°C, design pressure 3.0 bar)
Ballast Water Tanks	: ≈ 3,090 m ³
Marine Diesel Oil Tanks	: ≈ 460 m ³
Fresh Water Tank	: ≈ 190 m ³

SAFETY SYSTEM

Lifeboat	: 1 x 20 men, free-fall type
Rescue Boat	: 1 x 6 men, O/B motor
Liferaft	: 2 x 20 men, inflatable type
Water Spray System	: according to IGC Code
Dry Chemical Powder System	: according to IGC Code
Gas Detection System	: according to IGC Code
CO ₂ System	: according to Rules & Regulation

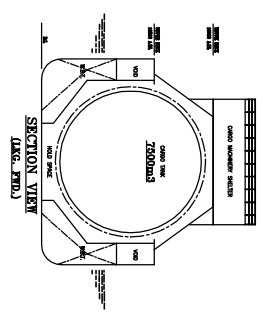
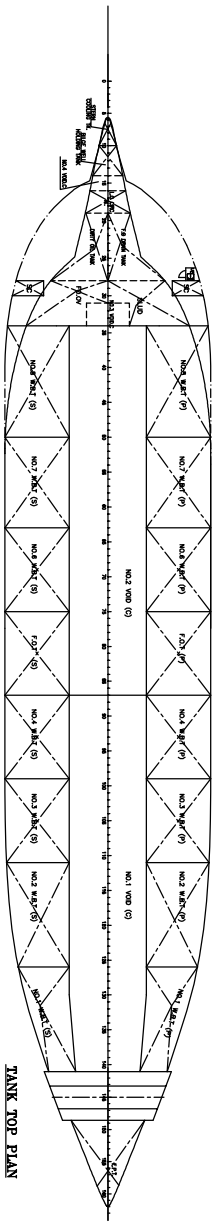
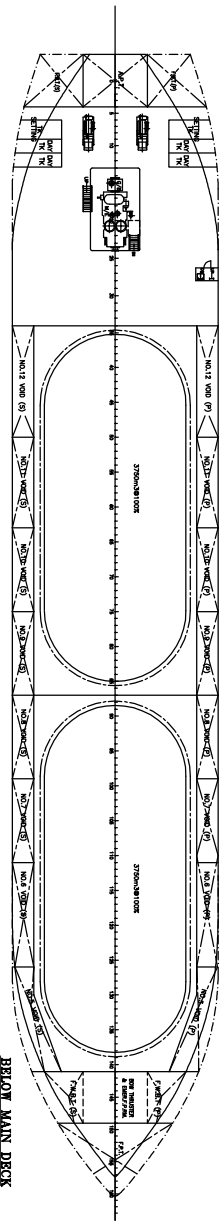
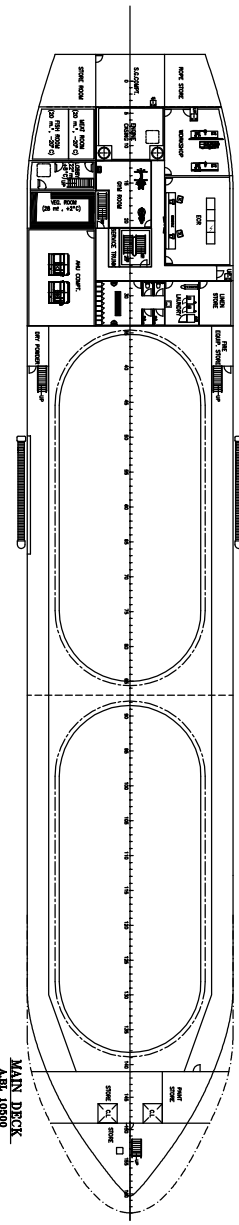
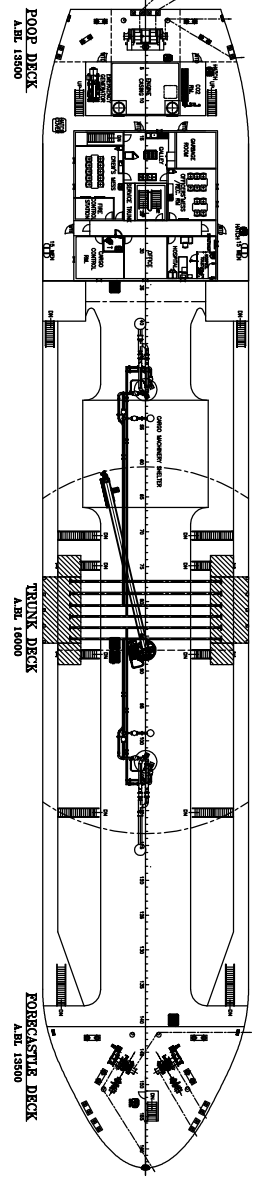
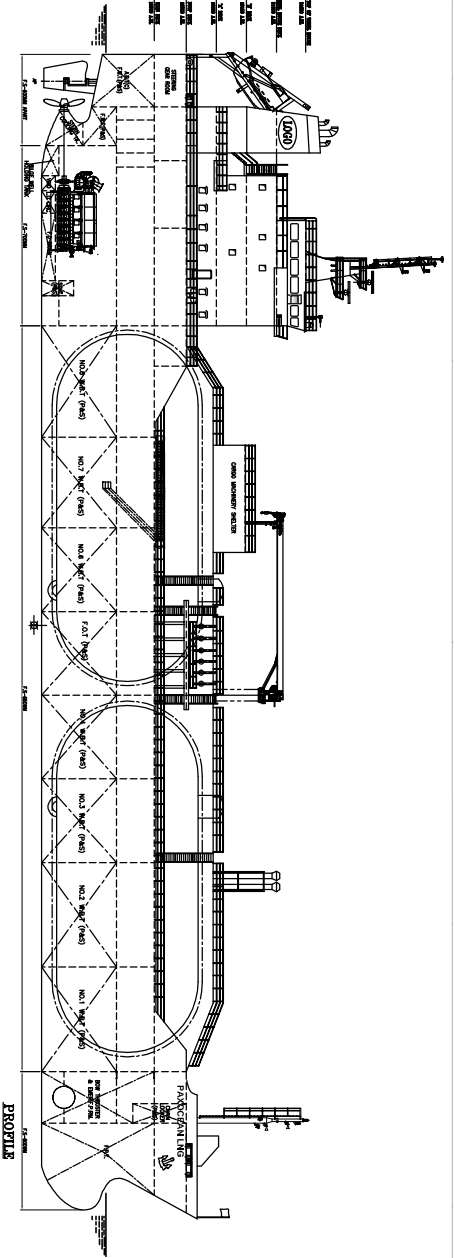
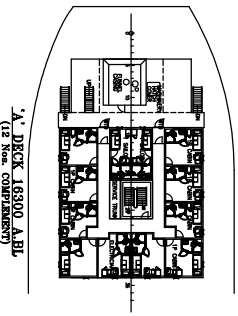
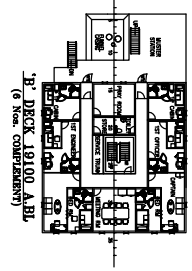
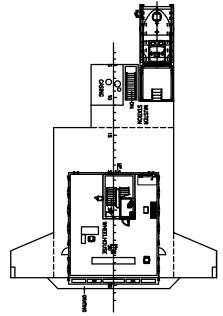
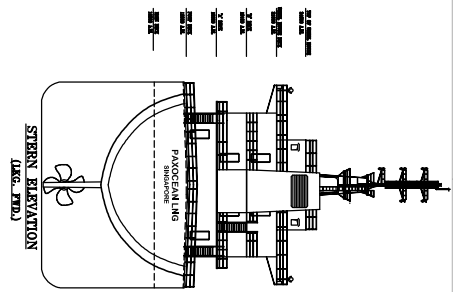
GENERAL ARRANGEMENT

PaxOcean Engineering Pte Ltd

1 Kim Seng Promenade, #06-02 Great World City, Singapore 237994

Tel: +65 6733 3500 ♣ Fax: +65 6836 1642 ♣ marketing@paxocean.com ♣ www.paxocean.com

Note: The information and sketches in this document are given in good faith without express, implied or statutory warranty or condition.



PRINCIPAL PARTICULARS

LENGTH (O.A.) : 108.00 m
 BREADTH (MID.) : 18.20 m
 DRAUGHT (MID.) : 10.50 m
 DESIGNED DRAUGHT : 8.00 m
 COMPARTMENT : 18 Nos.

Paxocean		DRAWN BY: HILL, CHECKED BY: SWANBERG, DATE: 12/20/06	
OWNER	PAXOCEAN SHIPYARD PTE. LTD.	SCALE	1:1
PROJECT	7500m ³ LNG CARRIER	SHEET	1/1
TITLE	GENERAL ARRANGEMENT	DATE	12/20/06
DESIGNED BY	OMK	DATE	12/20/06
CHECKED BY	OMK	DATE	12/20/06
APPROVED BY	OMK	DATE	12/20/06
DATE	12/20/06	DATE	12/20/06

Project Engineering File # 0712, Draw # 0712, Rev # 01, Date # 12/20/06, Project # 7500m³ LNG CARRIER, Sheet # 1/1, Total # 1/1, File # 0712_01_01.dwg