

MAIN PARTICULARS

Class Notation	: BV I ✱ I 3 IN (2) Z, LNG bunkering ship/ Ind, ✱ MC
Length Overall	: 75.70 m
Length Between Perpendiculars	: 72.13 m
Breadth Moulded	: 20.00 m
Depth Moulded	: 5.00 m
Design Summer Draft	: 3.00 m
Deadweight	: 2,300 tonnes
Gross Tonnage	: 3,800
Service Speed	: 10 knots @ 3.0m draft with 85% MCR
Endurance	: 10 days
Complement	: 10 P

CARGO HANDLING SYSTEM

Cargo Pump	: 2 x 250 m ³ /hr deepwell pump,
LNG Spray Pump	: 2 x 3m ³ /hr, submerged pump,
Cargo Compressor	: 1 set, electric driven
Cargo Vaporizer	: 1 set
Cargo Hose Davit	: 2 x 2 tonnes, manual operate
Cargo Manifolds	: 1 x liquid line, DN 150 1 x vapour line, DN 80 1 x nitrogen line, DN 15
Vent Mast	: 1 set
Cooling System	: Cooling water/glycol system
Gas Combustion Unit	: 1 set
<u>Options</u>	
Nitrogen/Dry Air Generator	: 1 x 100 m ³ /hr @ 8 bar
Cargo Control & Monitoring System	: Custody Transfer and Measuring System

MACHINERY

<u>Main Engine</u>	
Main Engine	: 2 x 800 kW, High Speed, MDO fueled
Propeller	: 2 x 4-bladed FPP Propeller
<u>Generator Sets</u>	
Main Generator	: 2 x 300 ekW, MDO fueled, 415V/3/50Hz

CAPACITY

LNG Cargo Tanks	: 4,000 m ³ (1 x IMO Type C cylindrical tank, design temp. -163°C, design pressure 4.5 bar)
Marine Diesel Oil Tanks	: ≈ 100 m ³
Fresh Water Tank	: ≈ 65 m ³

SAFETY SYSTEM

Liferaft	: 2 x 10 men, inflatable type
Water Spray System	: according to IGC Code
Dry Chemical Powder System	: according to IGC Code
Gas Detection System	: according to IGC Code
CO ₂ System	: according to Rules & Regulation

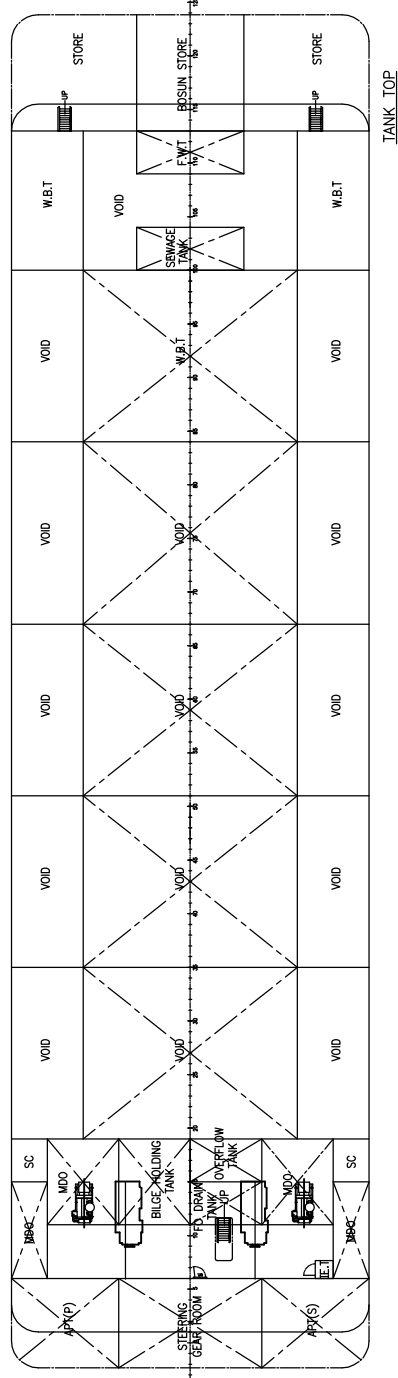
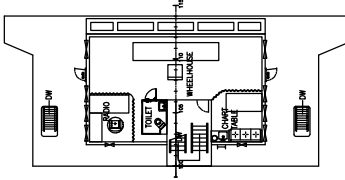
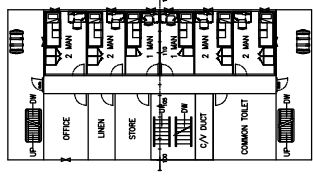
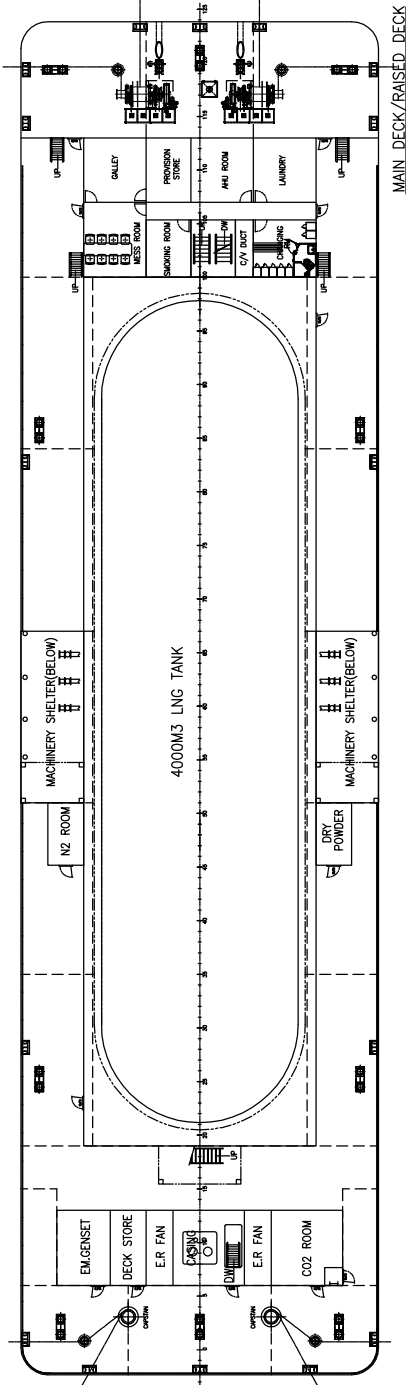
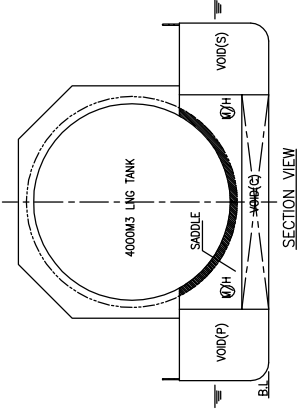
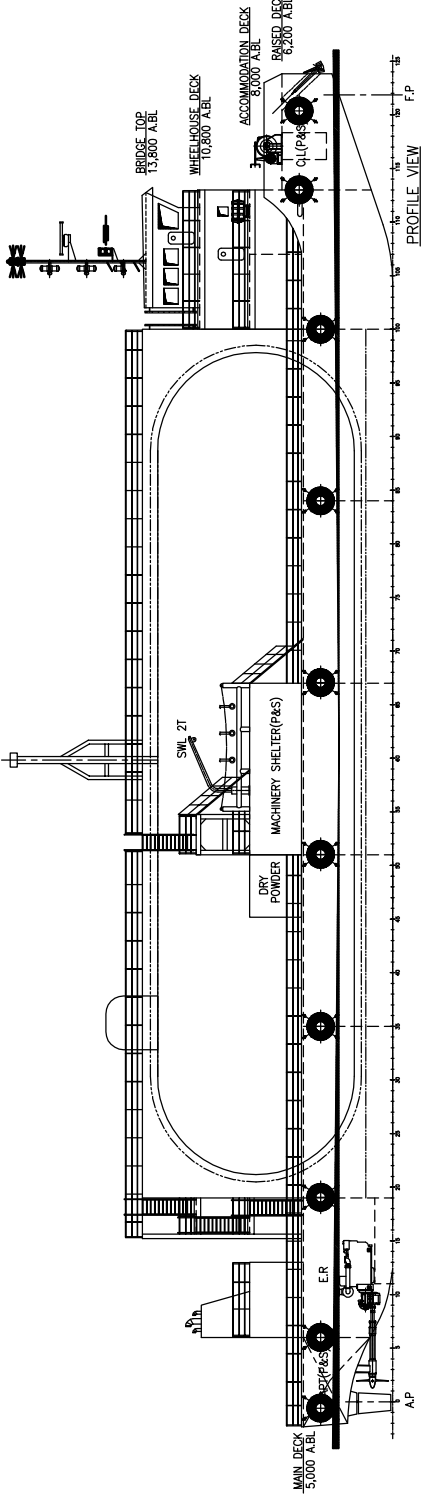
GENERAL ARRANGEMENT

PaxOcean Engineering Pte Ltd

1 Kim Seng Promenade, #06-02 Great World City, Singapore 237994

Tel: +65 6733 3500 ♣ Fax: +65 6836 1642 ♣ marketing@paxocean.com ♣ www.paxocean.com

Note: The information and sketches in this document are given in good faith without express, implied or statutory warranty or condition.



PRINCIPAL PARTICULARS & CAPACITIES

LENGTH O.A.	75.70M
LENGTH B.P.	73.12M
BEAM M.D.	20.00M
HEIGHT B.P.	3.00M
DRAFT DESIGNED	3.00M
FRAME SPACE	0.65M
COMPLEMENT	10 MEN
LNG	4000 M3
FRESH WATER	100 M3
BALLAST WATER	600 M3
MAIN ENGINE	APPROX. 2400 HP
SERVICE SPEED	10 KTS/BROUWER

OWNER		DRAWN BY	
DESIGNED BY		CHECKED BY	
SCALE		DATE	
PROJECT NO.		PROJECT	
TITLE	GENERAL ARRANGEMENT		
DATE NO.	E71614-100-001	REV. A	SHEET 1/1
DATE	1.15.20		REV. A.1
DATE	30/09/2016		JY
REVISED	DWX		DWVC
DESIGNED	DWVC		DWVC

WITHIN BY 13 IN 81.7 LNG bunkering study/ing
 #K or equivalent
Paxocean

PROJECT NO. 4000m3 LNG BARGE
 TITLE GENERAL ARRANGEMENT
 DATE NO. E71614-100-001 REV. A SHEET 1/1
 DATE 1.15.20
 DATE 30/09/2016
 REVISED DWX
 DESIGNED DWVC

Paxocean Engineering Pte Ltd, 147 Pte. East Coast Road, Singapore 415994. Tel: 65 63372000 Fax: 65 63877202